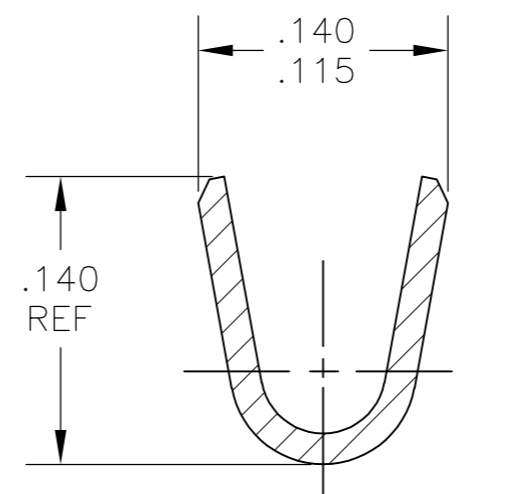
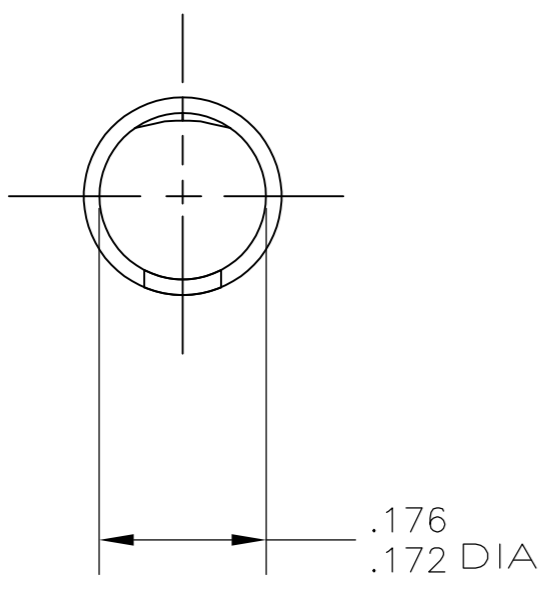
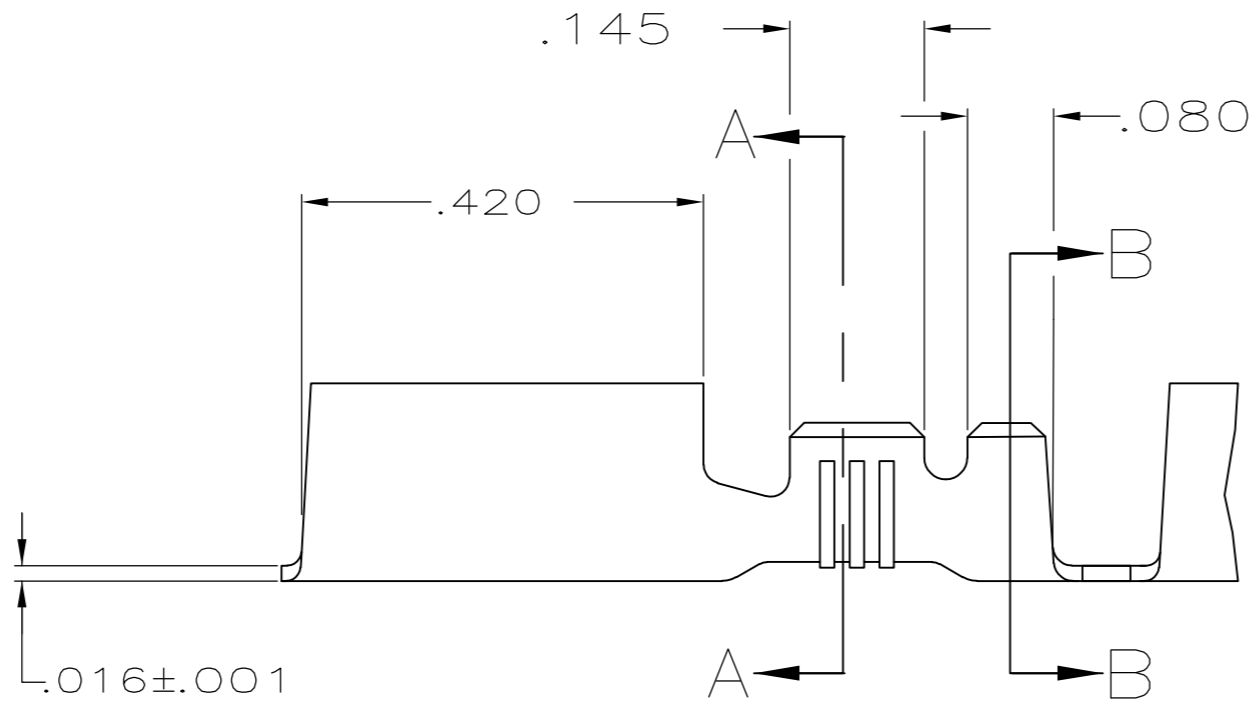
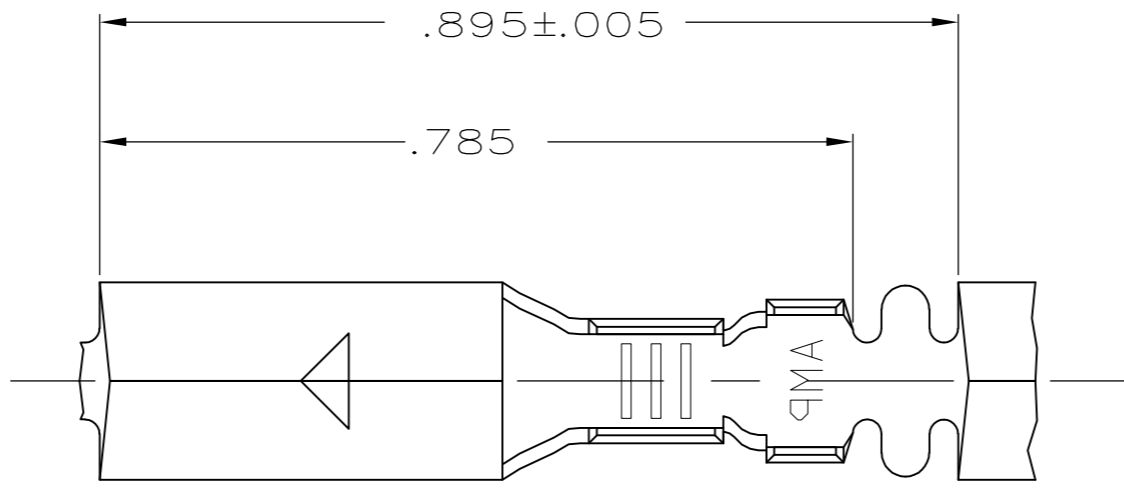
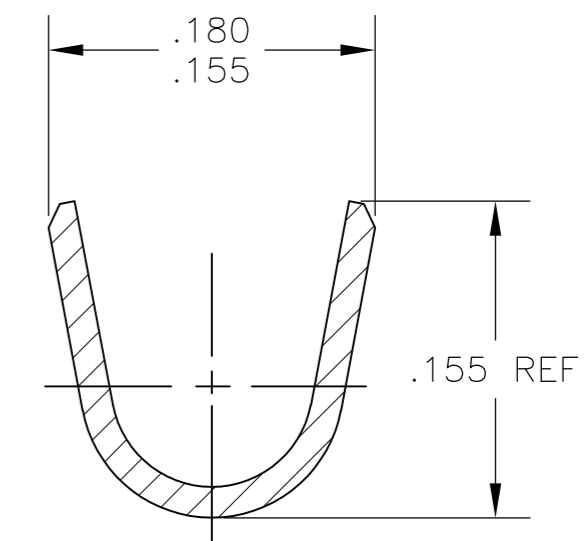


THIS DRAWING IS UNPUBLISHED. RELEASED FOR PUBLICATION  
 © COPYRIGHT - By - ALL RIGHTS RESERVED.

| LOC | DIST | REVISIONS   |                           |         |        |
|-----|------|-------------|---------------------------|---------|--------|
| P   | LTR  | DESCRIPTION | DATE                      | DWN     | APVD   |
| AF  | 50   | S2          | REVISED PER ECO-11-004917 | 11MAR11 | RK HMR |



SECTION A-A  
SCALE 10:1



SECTION B-B  
SCALE 10:1

- 1 CONTINUOUS STRIP ON REELS
- 2 TIN PL .000080 MIN PER MIL-T-10727
- 3 .000080 MIN TIN PLATE PER MIL-T-10727 OVER .000050 MIN NICKEL UNDERPLATE PER QQ-N-290.
- 4 .000030 MIN GOLD PLATE OVER .000050 MIN NICKEL UNDERPLATE PER QQ-N-290.
- 5 .000200 MIN SILVER OVER .000050 MIN NICKEL UNDERPLATE PER QQ-N-290
- 6 WIRE SIZE IS #18-#14 AWG
- 7 INSULATION RANGE IS .090-.125 DIA
- 8 PREPRODUCTION - FASR REQ
- 9 PRELIMINARY - NOT FOR PRODUCTION
- 10 OBSOLETE PARTS: OBSOLETE CIS STREAMLINING PER D.RENAUD/D.SINISI

|             |        |   |          |
|-------------|--------|---|----------|
|             | 5      | 9 | 60798-8  |
| 10 OBSOLETE | 4      | 8 | 60798-7  |
|             | 3      |   | 60798-6  |
|             | 2      |   | 60798-4  |
|             | -      |   | 60798-2  |
|             | FINISH |   | PART NO. |

| TYPE               | WIDTH | STRIP LENGTH ±.015 | TYPE              | WIDTH | ±.002 HEIGHT | WIRE |
|--------------------|-------|--------------------|-------------------|-------|--------------|------|
| F OR O             | .140  | .210               | F                 | .100  | .077         | 14   |
|                    |       |                    |                   |       | .067         | 16   |
|                    |       |                    |                   |       | .061         | 18   |
| INSUL BARREL CRIMP |       |                    | WIRE BARREL CRIMP |       |              |      |

THIS DRAWING IS A CONTROLLED DOCUMENT.

|                  |               |          |
|------------------|---------------|----------|
| DWN              | P FORTNEY     | 12/13/88 |
| CHK              | MS FEHER      | 6/14/89  |
| APVD             | D DECKER      | 6/14/89  |
| PRODUCT SPEC     |               |          |
| APPLICATION SPEC |               |          |
| WEIGHT           | -             |          |
| MATERIAL         | #4 HARD BRASS | FINISH   |
|                  | SEE TABLE     |          |

TE Connectivity

RECEPTACLE, SHUR PLUG, .180 DIA

|       |     |           |        |            |       |               |   |
|-------|-----|-----------|--------|------------|-------|---------------|---|
| SIZE  | A2  | CAGE CODE | 00779  | DRAWING NO | 60798 | RESTRICTED TO | - |
| SCALE | 5:1 | SHEET     | 1 of 1 | REV        | S2    |               |   |